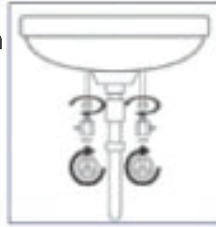


INSTALLATION

BW-1100

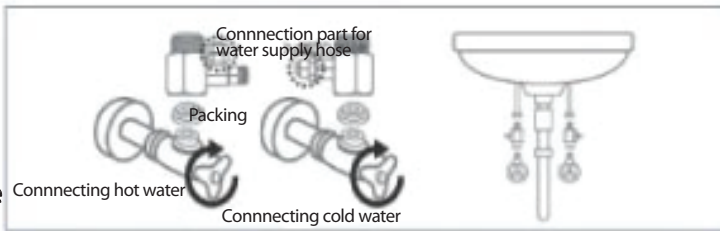
1. SEPARATE THE WATER SUPPLY PIPE(CHANGE FLEXIBLE HOSE)

Turn the temperature control valve of a washstand to the right and detach the connection nut by turning it to the left. (If the existing water supply pipe is not the same as the flexible hose enclosed, the existing pipe should be changed by detaching the connection nuts on the top and on the bottom of the washstand.)



2. CONNECT THE WATER QUANTITY CONTROL VALVE

Cut the water supply hose into appropriate length for both hot water and cold water. Undo the nut next to the water quantity control valve and push the tip of the water supply hose into it.



Fasten the nut again for connection and attach the water supply pipe by putting the packing into the water quantity control valve.

INSTALLATION

BW-1000

1. CONNECT THE WATER QUANTITY CONTROL VALVE

Lock the toilet water supply valve and unlock the connecting part using a wrench. Assemble the water quantity control valve, the rubber packing, and the toilet water pipe. (If the water supply pipe is not the same as the flexible hose enclosed, the existing pipe should be changed by detaching the connection nuts on the top and on the bottom of the washstand.)

2. INSTALLATION OF BIDET

After connecting the hose, the procedure of the installation is the same as the BW-1100.



INSTALLATION

BW-1100,1000

1. CHECK THE CONDITION OF INSTALLATION

Check the proper operation of water spray and see if there is any leakage.

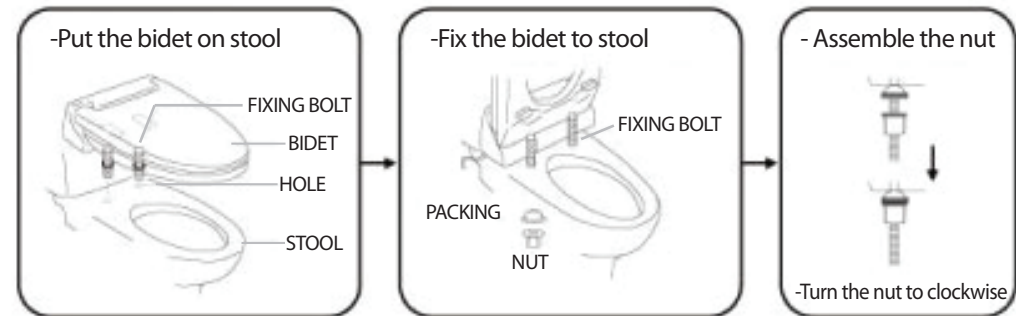
2. ADJUST THE WATER QUANTITY CONTROL VALVE

Adjust the water quantity control valve to get the optimal water pressure and temperature.

(In case the water pressure is higher than ordinary household's pressure due to the use of motor, it may not work well. Use the bidet after adjusting the valve.)

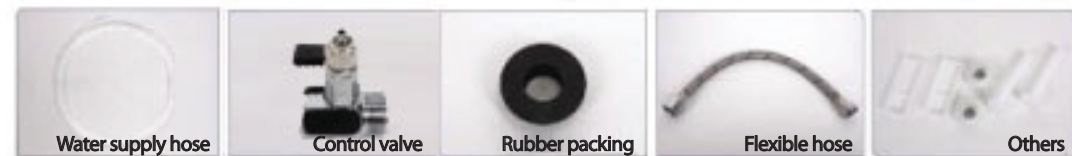


3. INSTALL BIDET



ACCESSORIES

BW-1000



ACCESSORIES

BW-1100

