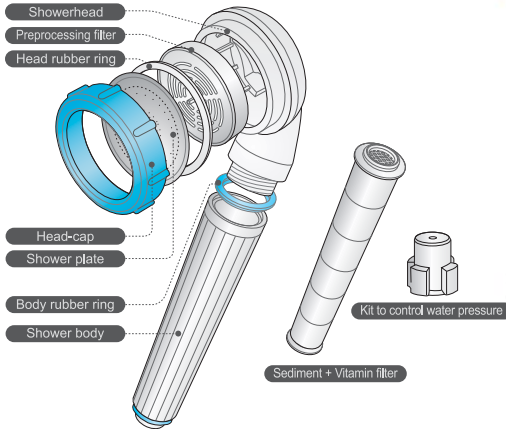


1. Name of Parts



It saves water up to
60% against
common shower head.

2. How to install



1. Disassemble the existing shower from shower hose.
2. Connect the BLUWASH Eco shower head to shower hose. Shower hose is global standard that can use all type of hoses.
3. Open the water tap. Check whether water leaks or not. In case of inconvenience due to high water pressure, use the adaptor included to control water pressure.

※ Inconvenience due to high water pressure can be resolved by using water pressure-control kit.

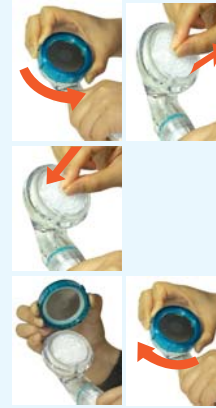
3. How to install water pressure-control kit



1. After inserting the shower body into part of hose installation as shown in the picture, equip shower hose. Among 3 types of standard, choose and equip the most proper kit to control water pressure. (Kit standard: 0.2mm, 0.25mm, 0.3mm)
2. Equip the shower hose as shown in the picture.
3. If you don't like the water pressure you choose, fasten water tap in a proper place, which will make fresher shower.

4. How to replace pre-processing filter

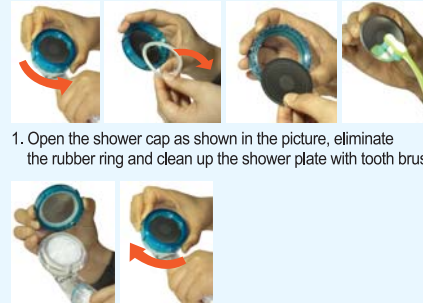
The replacement cycle of preprocessing filter is about 3-4 months. It varies depending on water quality, water pressure and the amount of water use.



1. Disassemble the shower head-cap in arrow direction and eliminate the polluted filter as shown in the picture.
2. Insert new filter into shower head as shown in the picture.
3. Place the shower plate and rubber ring into head-cap and fasten in arrow direction as shown in the picture.

5. How to clean shower plate

The clog of plate depends on water quality.



1. Open the shower cap as shown in the picture, eliminate the rubber ring and clean up the shower plate with tooth brush.
2. Assemble the shower cap with shower plate, and check if water leaks.



6. How to replace sediment filter

The replacement cycle of preprocessing filter is about 2 months. It varies depending on water quality, water pressure and the amount of water use.



1. Disassemble the shower head-in arrow direction and eliminate the polluted filter inside the shower body as shown in the picture.
2. Replace the new filter into shower body as shown in the picture.
3. Place the shower head to shower body and fasten it as shown in the picture.

7. Cautions

1. The discharged water from the shower head is not eatable.
2. To guarantee the proper function of shower head, replace the filter periodically as required.
3. Be sure to use the shower head under the temperature of 70°C. It may damage the shower head and filters.
4. Be careful not to lose the rubber ring when you disassemble the product to replace filter.

8. Specifications

Body of shower head	PC material
Water pressure/Temperature	0.7-7.5kgf/cm ² , 1-65°C
Shower plate structure	Micro pore discharge
Total number of shower plate holes	Ø0.20 / 340ea
Cartridge structure	Revolving cartridge structure
Pre-filter replacement	About 3-4months
Sediment filter replacement	About 2months

9. Warranty

1. Warranty period is one (1) year after purchase
2. The product has passed out strict quality control and inspection procedure.
3. Any defect in the products found during normal operation of the product will be returned, replaced free of charge under warranty period.
4. Return/Replacement in the cases below is provided at charges of customers even under warranty.
 - The warranty period is over
 - Damage caused by customer's lack of caution
 - Inappropriate repair or restructuring
 - Violation of instruction herein
 - Consumable filter replacement